

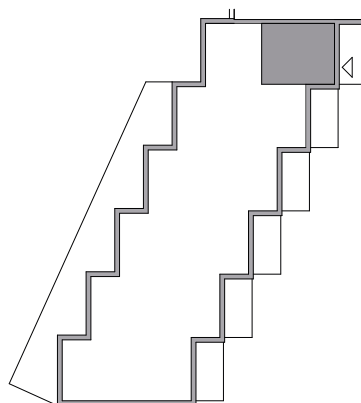
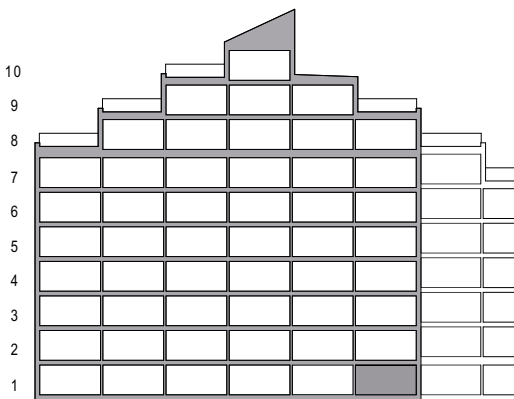
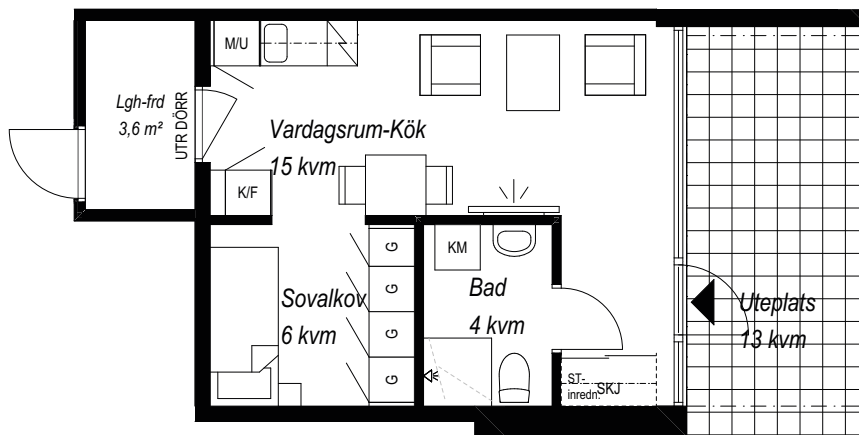
0 10

SKALA 1:100

AVVIKELSER KAN FÖREKOMMA. YTANGIVELSER ÄR PRELIMINÄRA



- ▶ ENTRÉ
- /// KAPPHYLLA
- G ENTRÉ
- ST STÄD
- G ENTRÉ
- SKJ SKJUTDÖRRSGARDEROB
- M/U HÖGSKÅP M MIKRO OCH UGN
- K KYL
- F FRY
- K/F KYL/FRY
- DM DISKMASKIN
- ◻ INDUKTIONSHÄLL
- TM TVÄTTMASKIN
- TT TORKTUMLARE
- KM KOMBIMASKIN

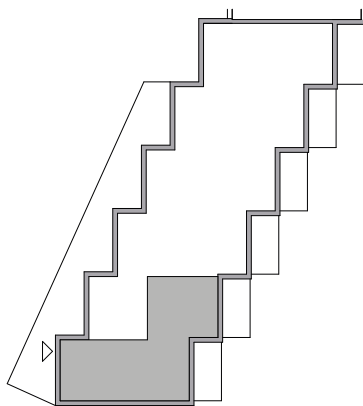
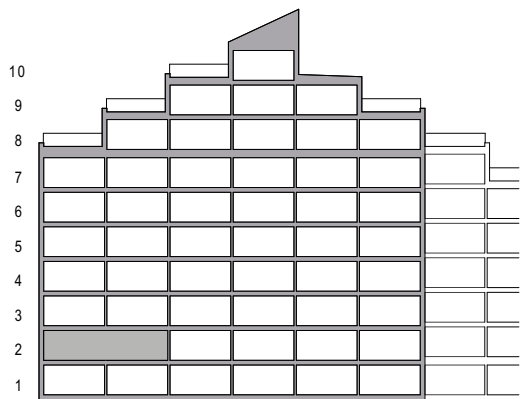


SKALA 1:100

AVVIKELSER KAN FÖREKOMMA. YTANGIVELSER ÄR PRELIMINÄRA



- ▶ ENTRÉ
- /// KAPPHYLLA
- G ENTRÉ
- ST STÄD
- G ENTRÉ
- SKJ SKJUTDÖRRSGARDEROB
- M/U HÖGSKÅP M MIKRO OCH UGN
- K KYL
- F FRY
- K/F KYL/FRY
- DM DISKMASKIN
- ◻ INDUKTIONSHÄLL
- TM TVÄTTMASKIN
- TT TORKTUMLARE
- KM KOMBIMASKIN


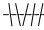







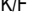







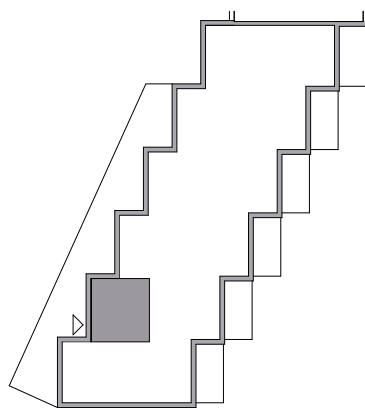
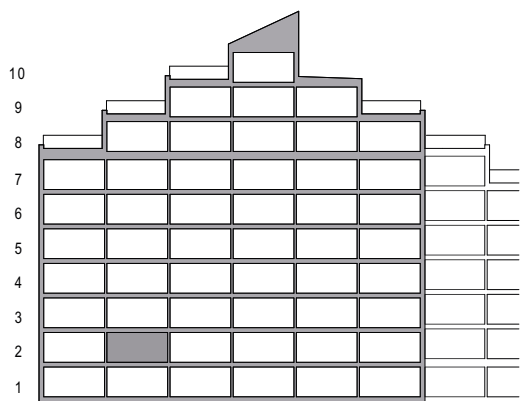
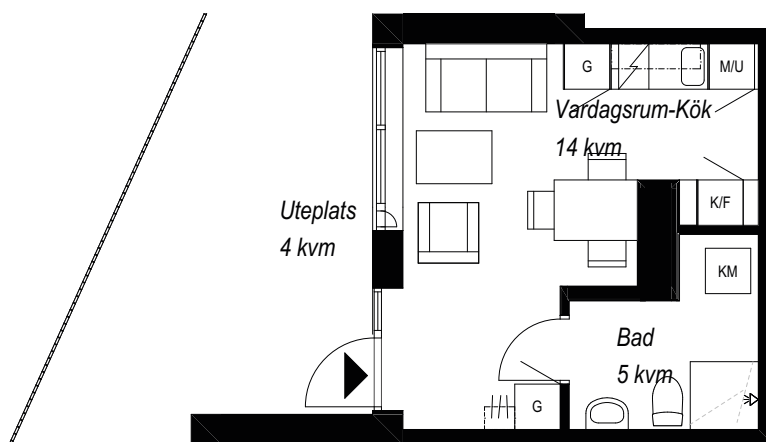
0 10

SKALA 1:100

AVVIKELSER KAN FÖREKOMMA. YTANGIVELSER ÄR PRELIMINÄRA



-  ENTRÉ
-  KAPPHYLLA
-  ENTRÉ
-  STÄD
-  ENTRÉ
-  SKJUTDÖRRSGARDEROB
-  HÖGSKÅP M MIKRO OCH UGN
-  KYL
-  FRY
-  KYL/FRYS
-  DISKMASKIN
-  INDUKTIONSHÄLL
-  TVÄTTMASKIN
-  TORKTUMLARE
-  KOMBIMASKIN


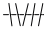





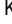

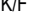







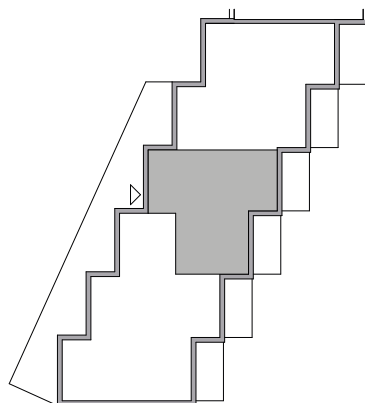
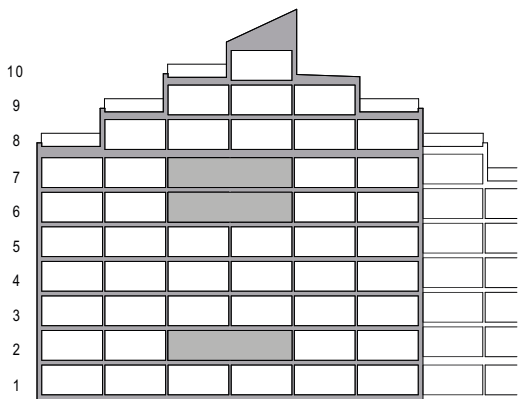
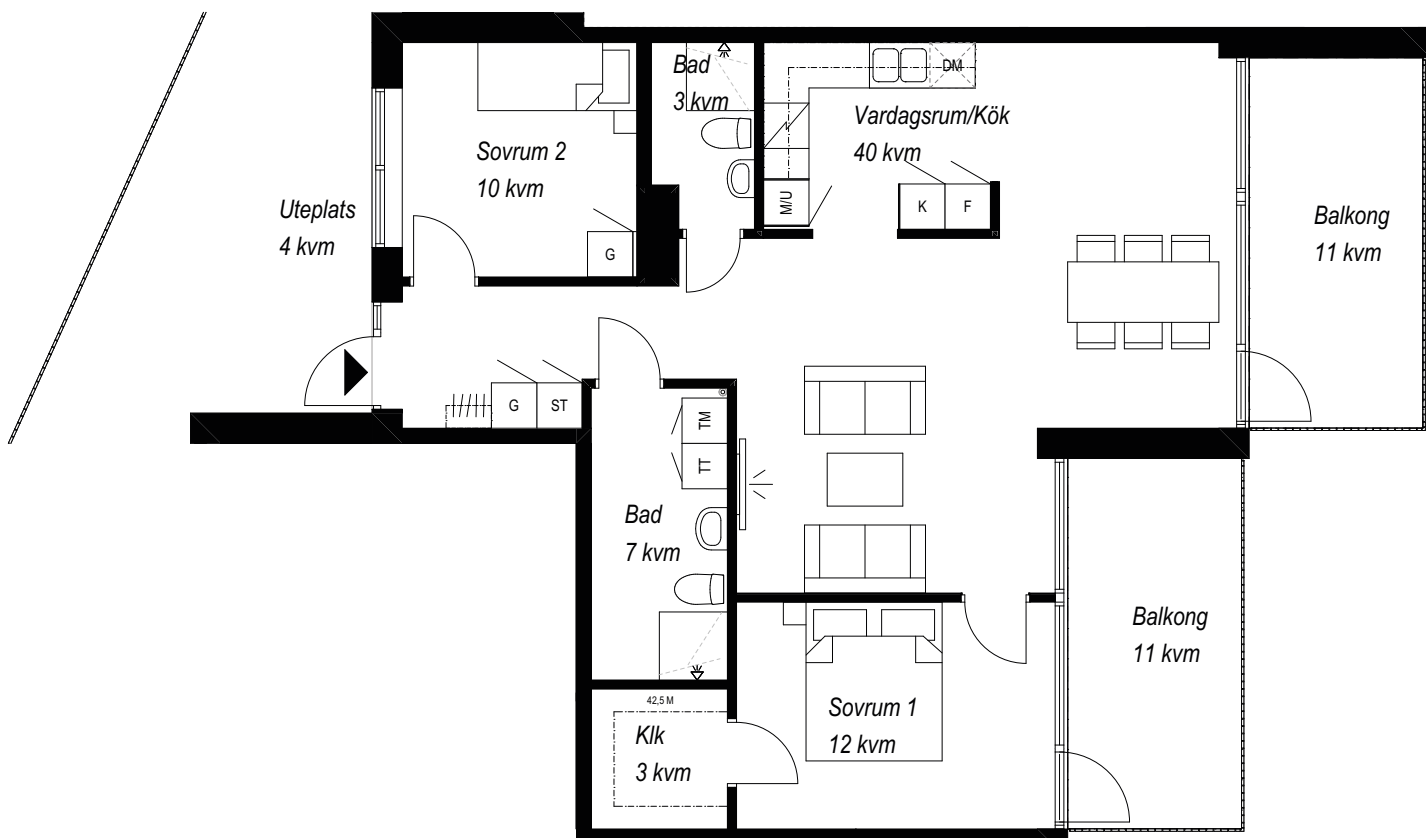
0 10

SKALA 1:100

AVVIKELSER KAN FÖREKOMMA. YTANGIVELSER ÄR PRELIMINÄRA



-  ENTRÉ
-  KAPPHYLLA
-  ENTRÉ
-  STÄD
-  ENTRÉ
-  SKJUTDÖRRSGARDEROB
-  HÖGSKÅP M MIKRO OCH UGN
-  KYL
-  FRYS
-  KYL/FRYS
-  DISKMASKIN
-  INDUKTIONSHÄLL
-  TVÄTTMASKIN
-  TORKTUMLARE
-  KOMBIMASKIN



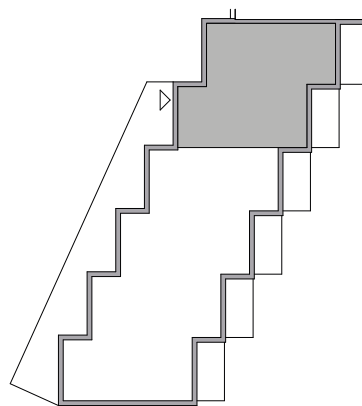
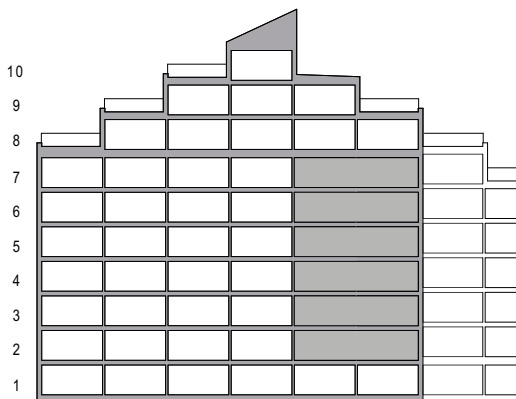
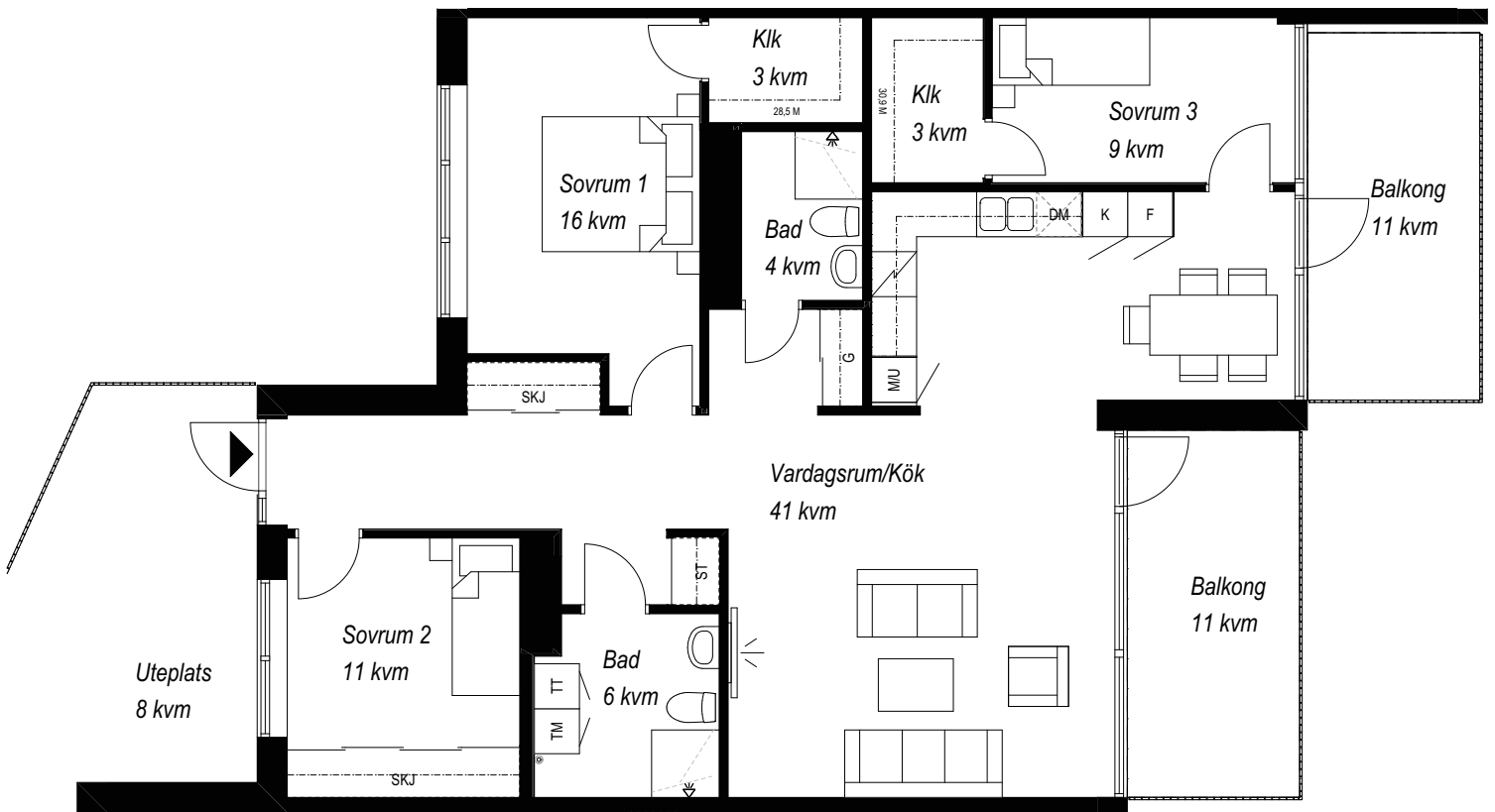
0 10

SKALA 1:100

AVVIKELSER KAN FÖREKOMMA. YTANGIVELSER ÄR PRELIMINÄRA



- ▶ ENTRÉ
- /// KAPPHYLLA
- G ENTRÉ
- ST STÄD
- G ENTRÉ
- SKJ SKJUTDÖRRSGARDEROB
- M/U HÖGSKÅP M MIKRO OCH UGN
- K KYL
- F FRY
- K/F KYL/FRYS
- DM DISKMASKIN
- INDUKTIONSHÄLL
- TM TVÄTTMASKIN
- TT TORKTUMLARE
- KM KOMBIMASKIN



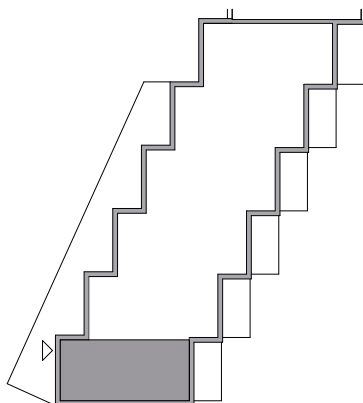
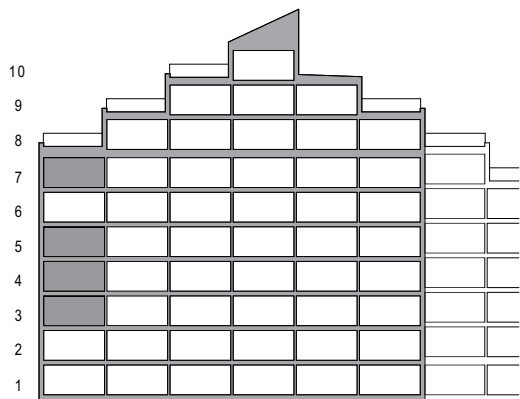
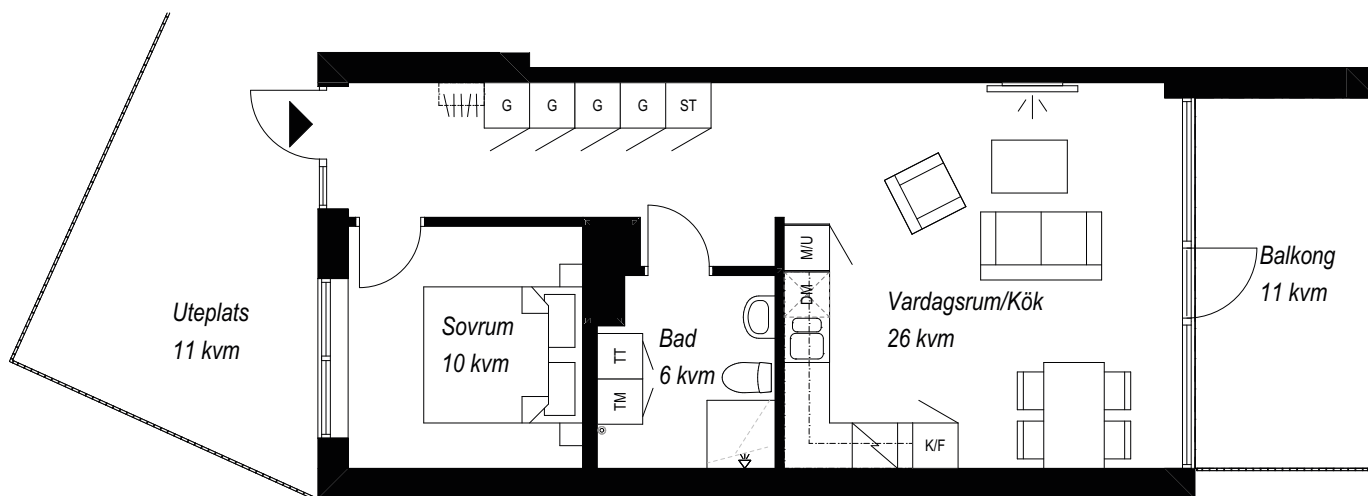
- ▶ ENTRÉ
- /// KAPPHYLLA
- G ENTRÉ
- ST STÄD
- G ENTRÉ
- SKJ SKJUTDÖRRSGARDEROB
- M/U HÖGSKÅP M MIKRO OCH UGN
- K KYL
- F FRY
- K/F KYL/FRYS
- DM DISKMASKIN
- INDUKTIONSHÄLL
- TM TVÄTTMASKIN
- TT TORKTUMLARE
- KM KOMBIMASKIN

0 10

SKALA 1:100

AVVIKELSER KAN FÖREKOMMA. YTANGIVELSER ÄR PRELIMINÄRA




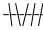



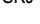
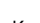
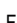


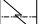






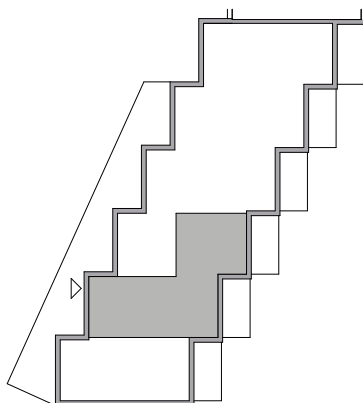
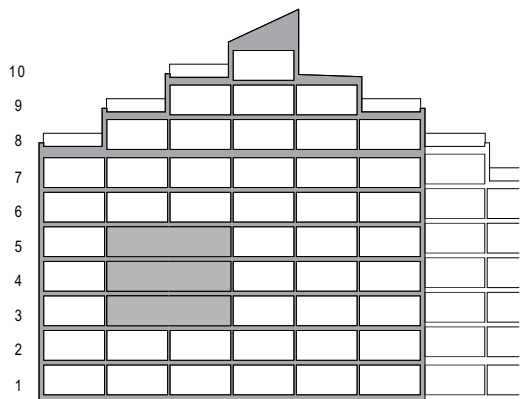
0 10


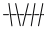





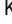

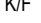

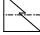



SKALA 1:100

AVVIKELSER KAN FÖREKOMMA. YTANGIVELSER ÄR PRELIMINÄRA



-  ENTRÉ
-  KAPPHYLLA
-  ENTRÉ
-  STÄD
-  ENTRÉ
-  SKJUTDÖRRSGARDEROB
-  HÖGSKÅP M MIKRO OCH UGN
-  KYL
-  FRYS
-  KYL/FRYS
-  DISKMASKIN
-  INDUKTIONSHÄLL
-  TVÄTTMASKIN
-  TORKTUMLARE
-  KOMBIMASKIN



-  ENTRÉ
-  KAPPHYLLA
-  ENTRÉ
-  STÄD
-  ENTRÉ
-  SKJUTDÖRRSGARDEROB
-  HÖGSKÅP M MIKRO OCH UGN
-  KYL
-  FRY
-  KYL/FRY
-  DISKMASKIN
-  INDUKTIONSHÄLL
-  TVÄTTMASKIN
-  TORKTUMLARE
-  KOMBIMASKIN

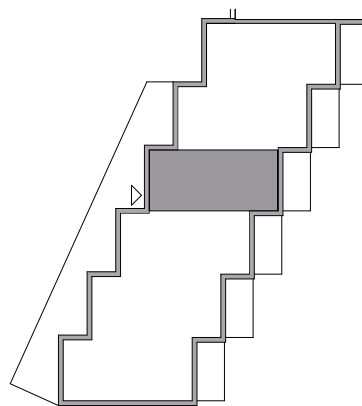
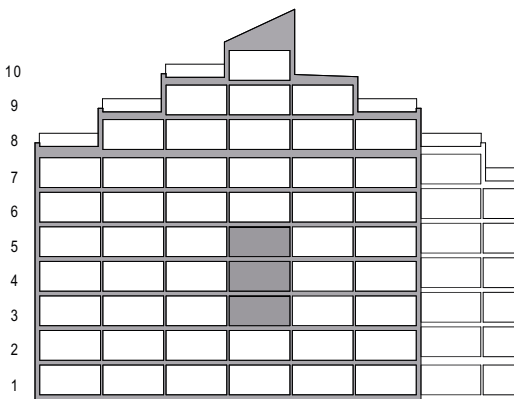
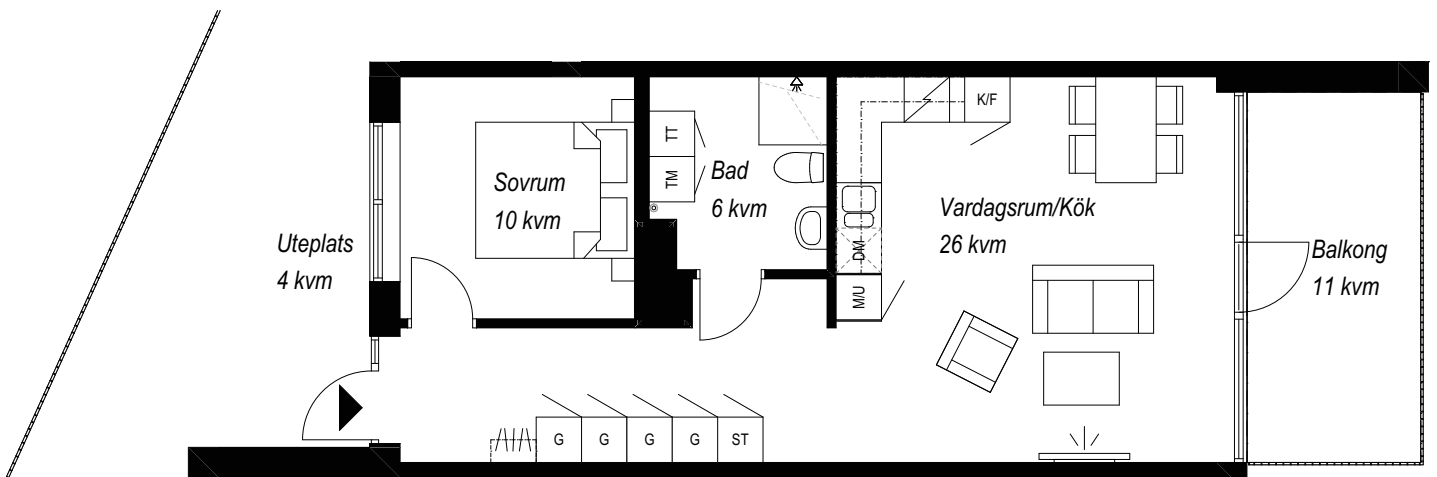
0 10

SKALA 1:100

AVVIKELSER KAN FÖREKOMMA. YTANGIVELSER ÄR PRELIMINÄRA







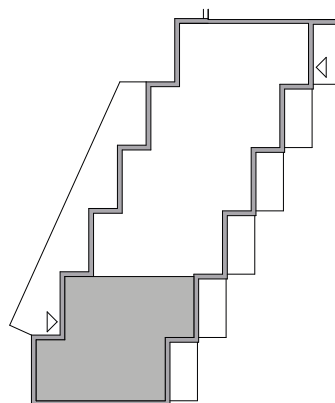
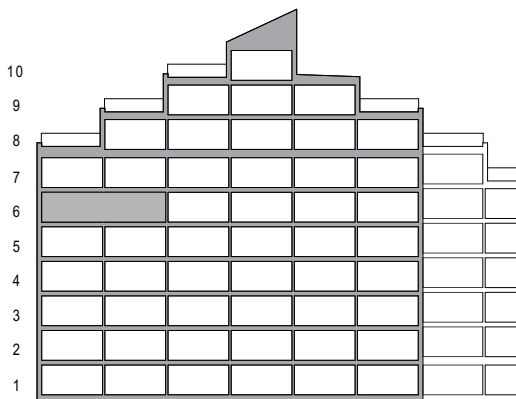
- ▶ ENTRÉ
- /// KAPPHYLLA
- G ENTRÉ
- ST STÄD
- G ENTRÉ
- SKJ SKJUTDÖRRSGARDEROB
- M/U HÖGSKÅP M MIKRO OCH UGN
- K KYL
- F FRY
- K/F KYL/FRYS
- DM DISKMASKIN
- INDUKTIONSHÄLL
- TM TVÄTTMASKIN
- TT TORKTUMLARE
- KM KOMBIMASKIN

0 10

SKALA 1:100

AVVIKELSER KAN FÖREKOMMA. YTANGIVELSER ÄR PRELIMINÄRA




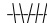



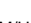
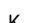
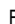









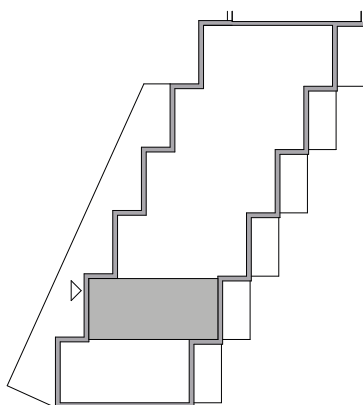
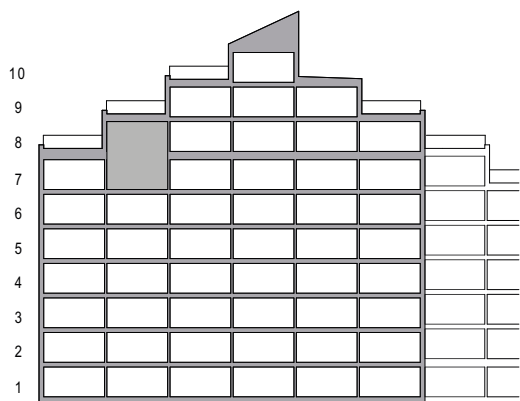
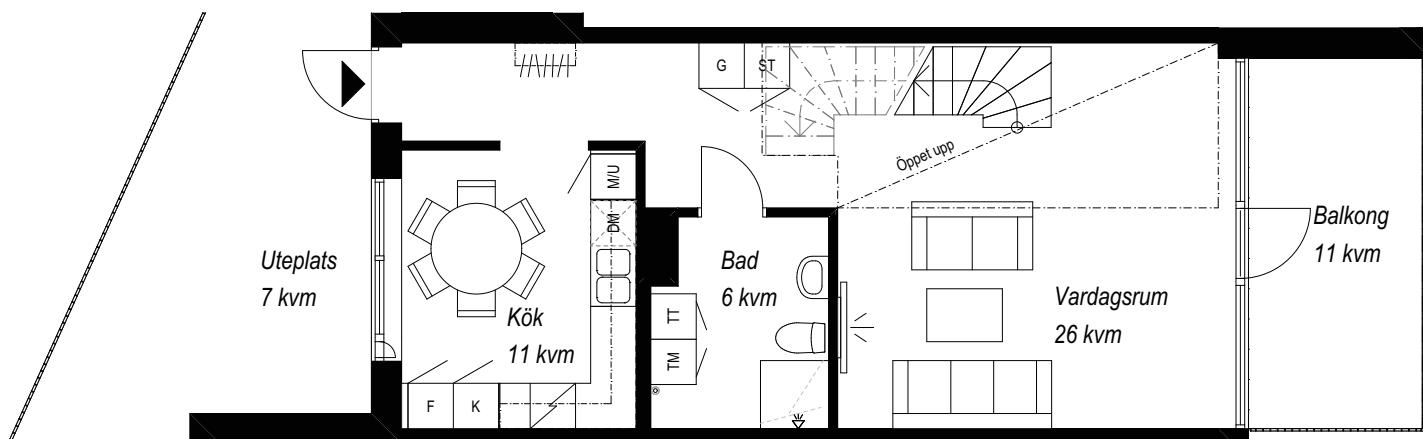
0 10

SKALA 1:100

AVVIKELSER KAN FÖREKOMMA. YTANGIVELSER ÄR PRELIMINÄRA




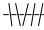







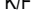
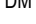
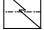

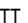

-  ENTRÉ
-  KAPPHYLLA
-  ENTRÉ
-  STÄD
-  ENTRÉ
-  SKJUTDÖRRSGARDEOB
-  HÖGSKÅP M MIKRO OCH UGN
-  KYL
-  FRY
-  KYL/FRYS
-  DISKMASKIN
-  INDUKTIONSHÄLL
-  TVÄTTMASKIN
-  TORKTUMLARE
-  KOMBIMASKIN

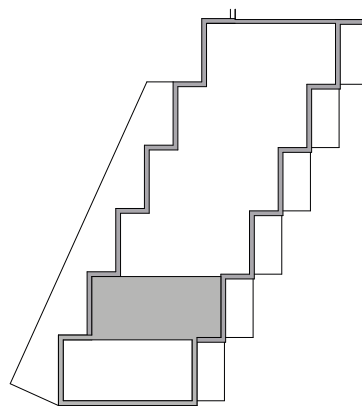
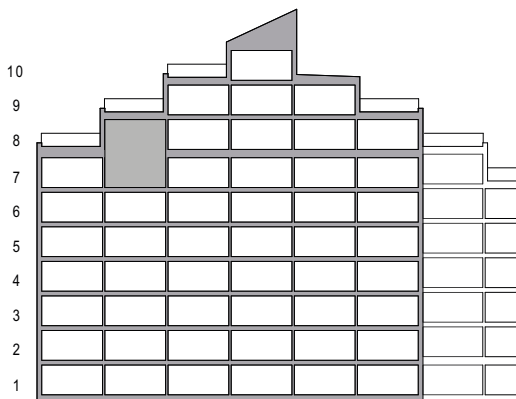
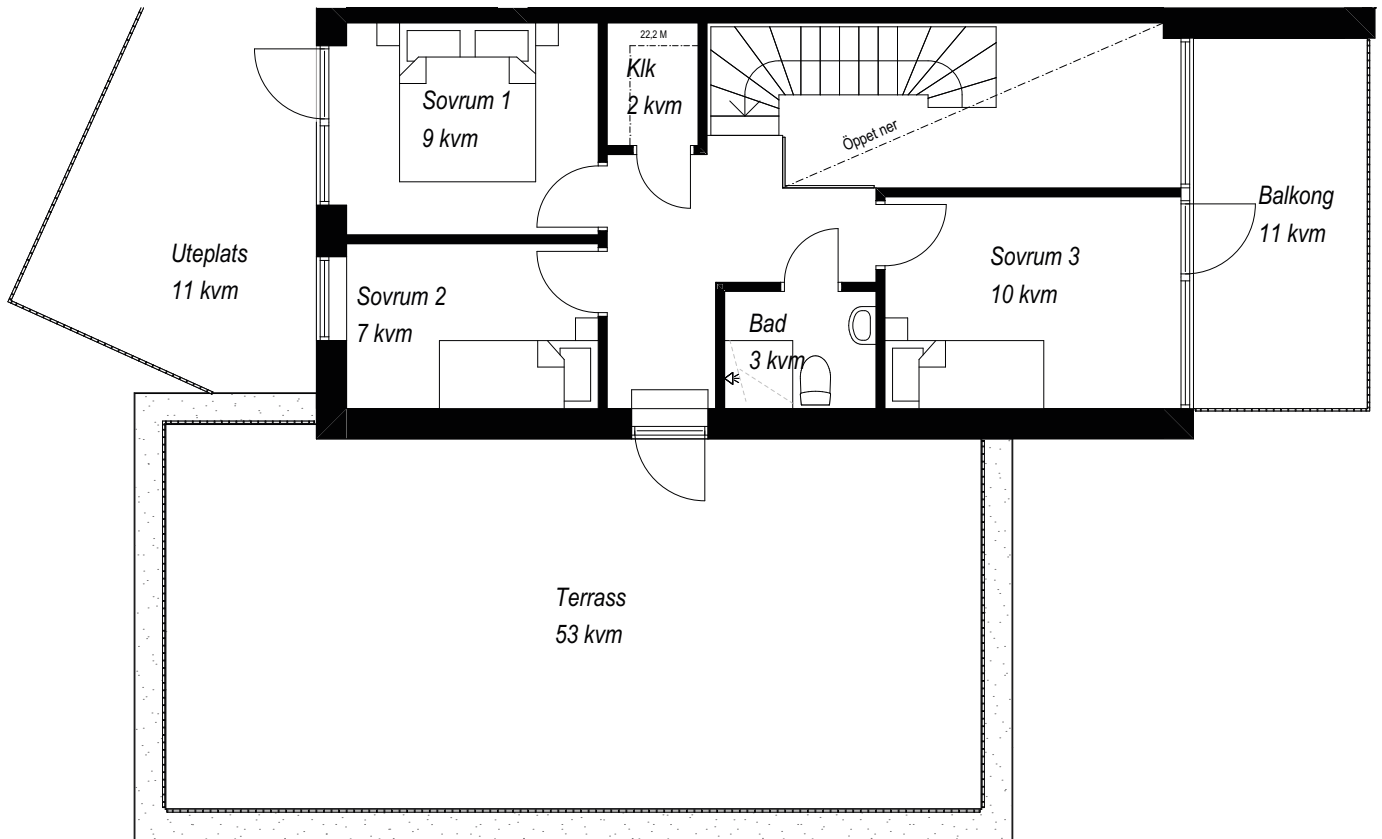


SKALA 1:100

AVVIKELSER KAN FÖREKOMMA. YTANGIVELSER ÄR PRELIMINÄRA



-  ENTRÉ
-  KAPPHYLLA
-  ENTRÉ
-  STÄD
-  ENTRÉ
-  SKJUTDÖRRSGARDEROB
-  HÖGSKÅP M MIKRO OCH UGN
-  KYL
-  FRYS
-  KYL/FRYS
-  DISKMASKIN
-  INDUKTIONSHÄLL
-  TVÄTTMASKIN
-  TORKTUMLARE
-  KOMBIMASKIN



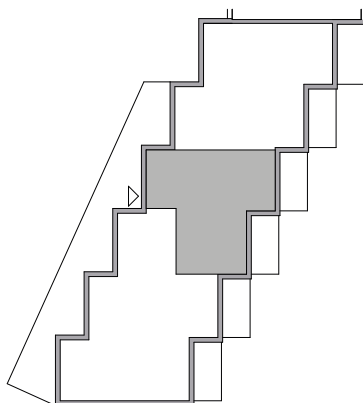
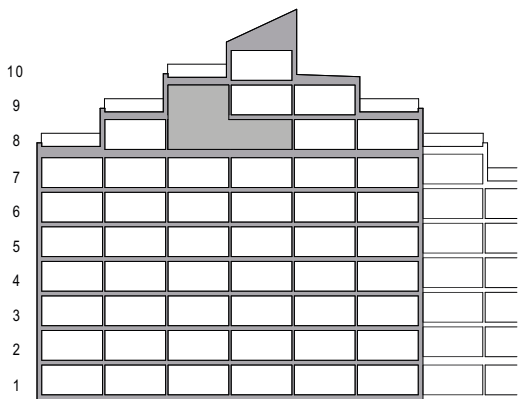
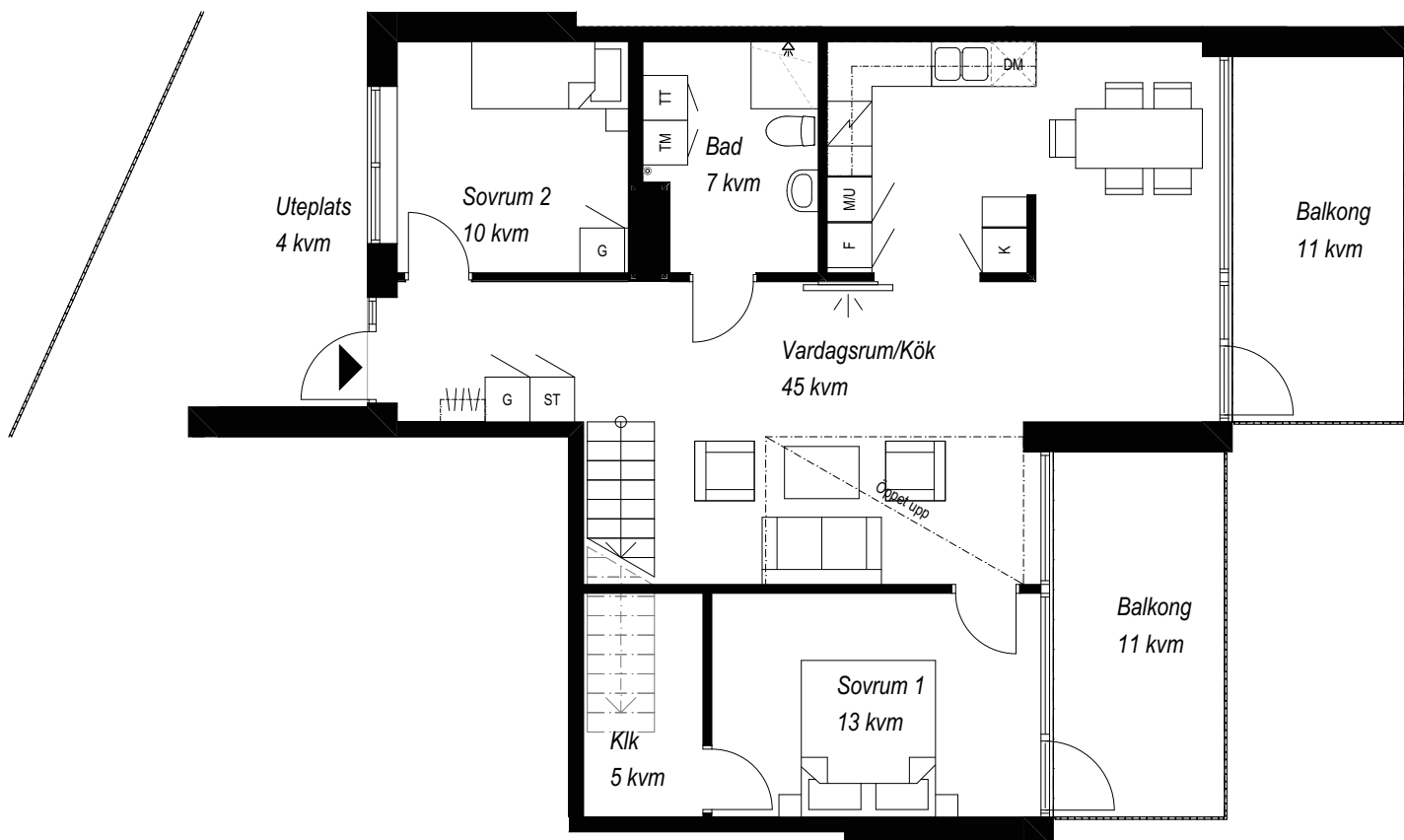
0 10

SKALA 1:100

AVVIKELSER KAN FÖREKOMMA. YTANGIVELSER ÄR PRELIMINÄRA



- ▶ ENTRÉ
- /// KAPPHYLLA
- G ENTRÉ
- ST STÄD
- G ENTRÉ
- SKJ SKJUTDÖRRSGARDEROB
- M/U HÖGSKÅP M MIKRO OCH UGN
- K KYL
- F FRYS
- K/F KYL/FRYS
- DM DISKMASKIN
- ◻ INDUKTIONSHÄLL
- TM TVÄTTMASKIN
- TT TORKTUMLARE
- KM KOMBIMASKIN



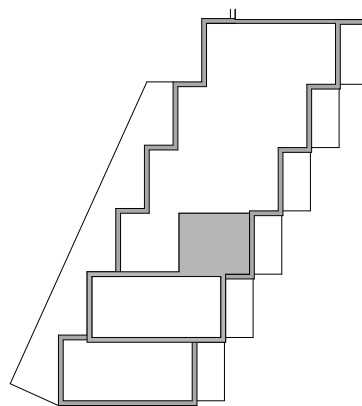
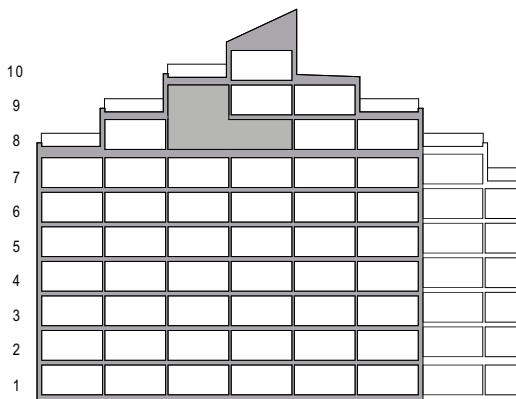
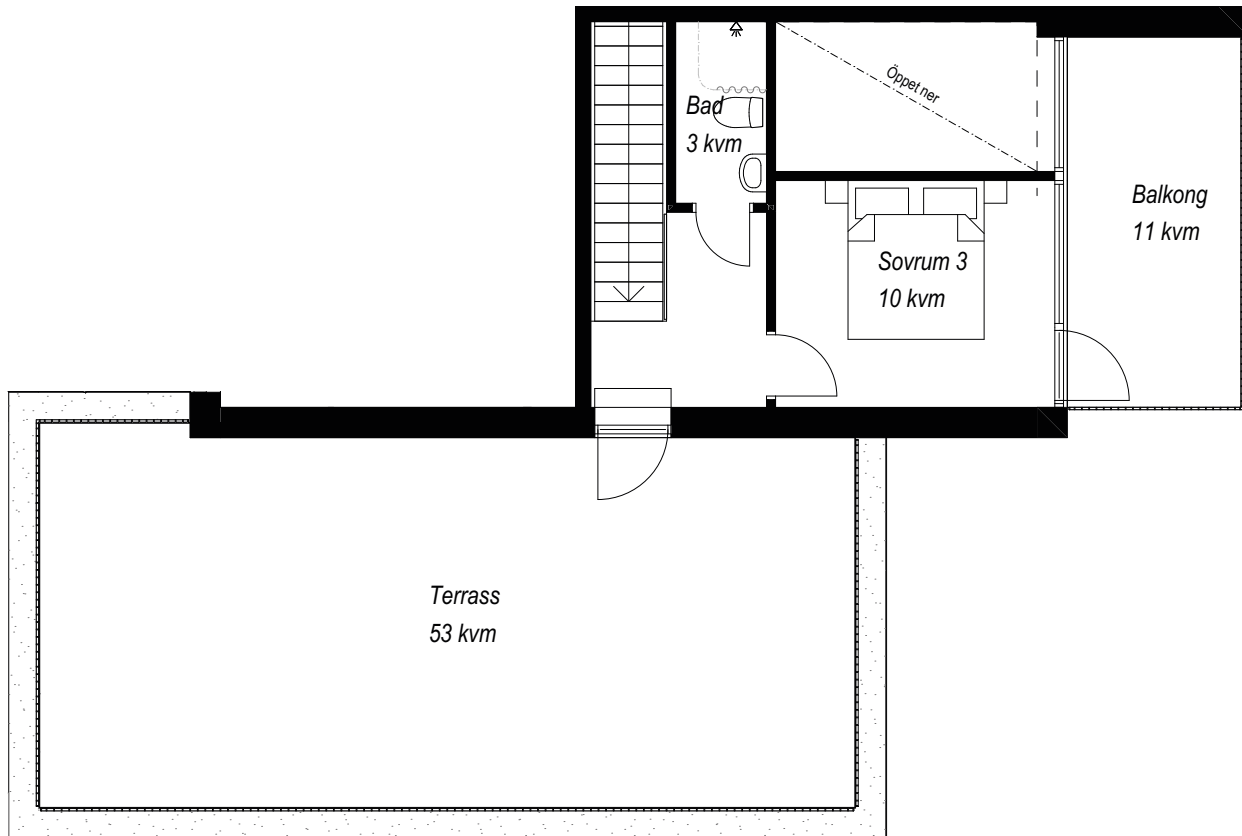
0 10

SKALA 1:100

AVVIKELSER KAN FÖREKOMMA. YTANGIVELSER ÄR PRELIMINÄRA



- ▶ ENTRÉ
- /// KAPPHYLLA
- G ENTRÉ
- ST STÄD
- G ENTRÉ
- SKJ SKJUTDÖRRSGARDEROB
- M/U HÖGSKÅP M MIKRO OCH UGN
- K KYL
- F FRY
- K/F KYL/FRY
- DM DISKMASKIN
- ◻ INDUKTIONSHÄLL
- TM TVÄTTMASKIN
- TT TORKTUMLARE
- KM KOMBIMASKIN



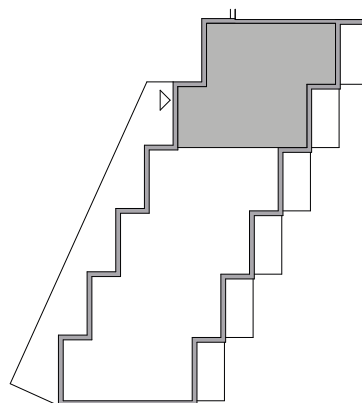
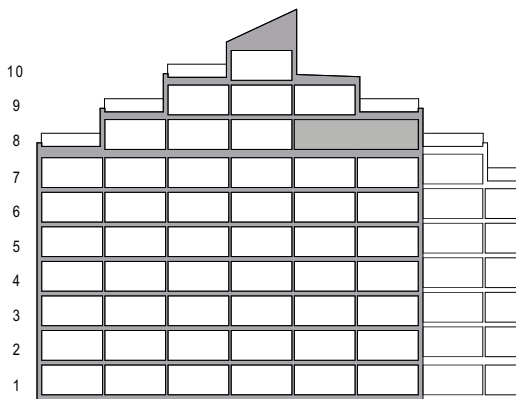
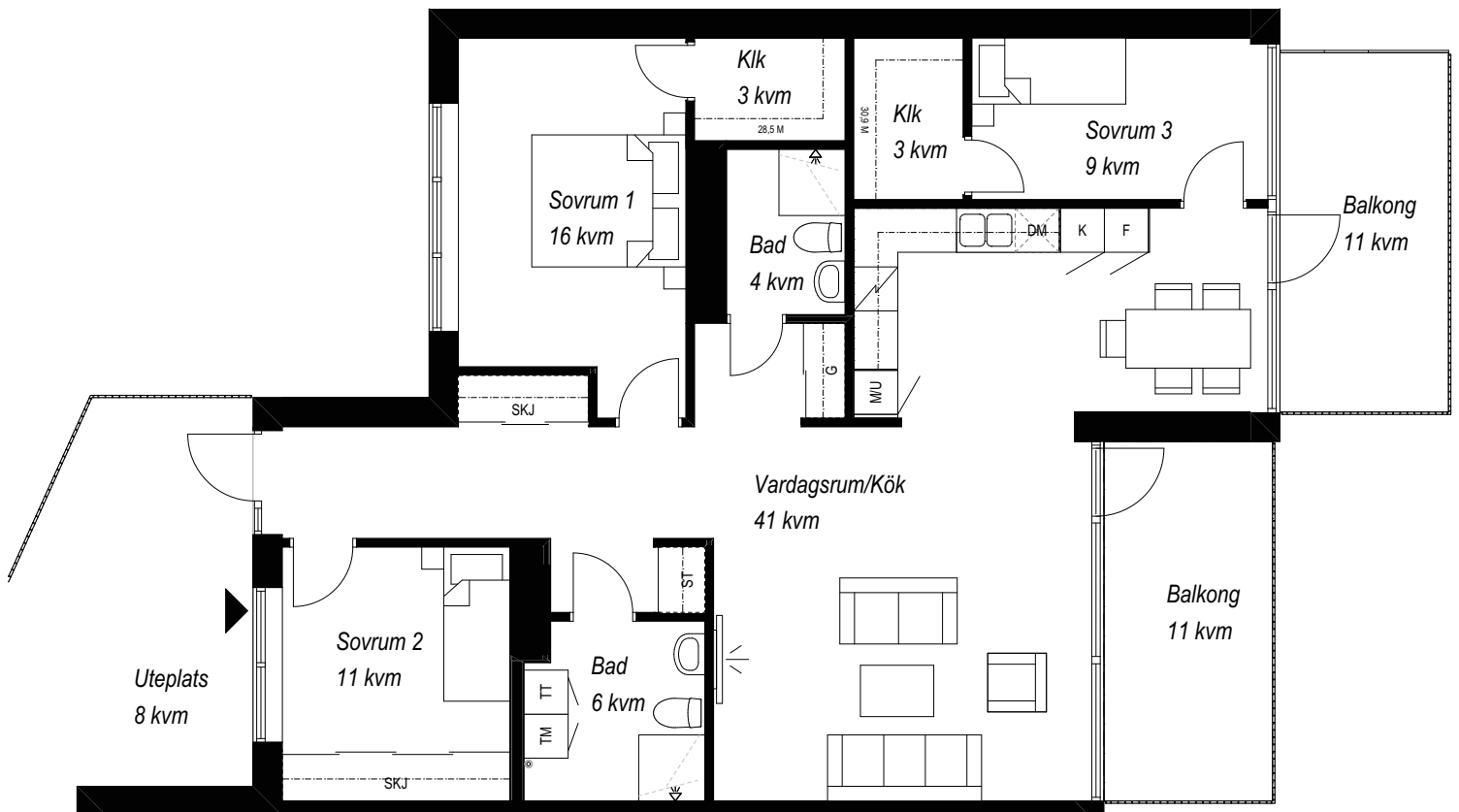
0 10

SKALA 1:100

AVVIKELSER KAN FÖREKOMMA. YTANGIVELSER ÄR PRELIMINÄRA



- ▶ ENTRÉ
- /// KAPPHYLLA
- G ENTRÉ
- ST STÄD
- G ENTRÉ
- SKJ SKJUTDÖRRSGARDEOB
- M/U HÖGSKÅP M MIKRO OCH UGN
- K KYL
- F FRY
- K/F KYL/FRYS
- DM DISKMASKIN
- ◻ INDUKTIONSHÄLL
- TM TVÄTTMASKIN
- TT TORKTUMLARE
- KM KOMBIMASKIN



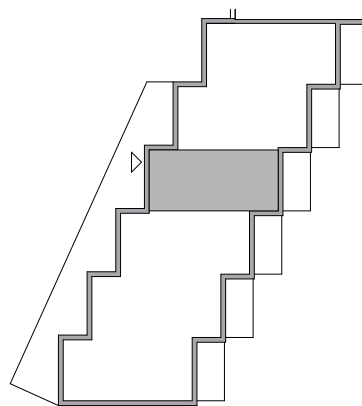
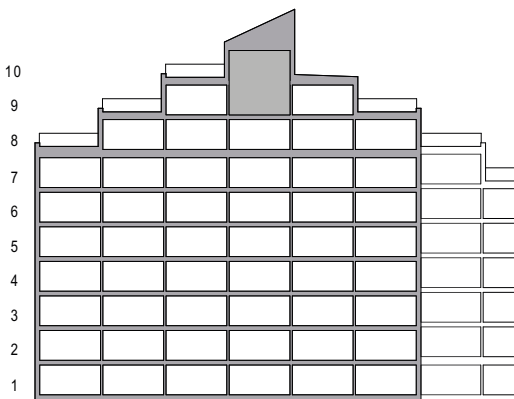
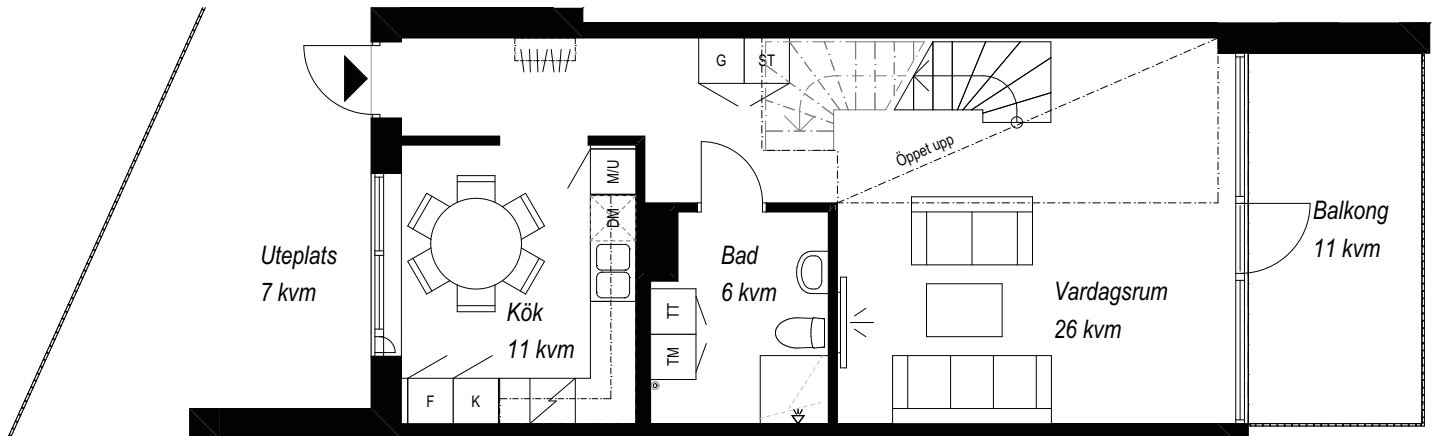
0 10

SKALA 1:100

AVVIKELSER KAN FÖREKOMMA. YTANGIVELSER ÄR PRELIMINÄRA




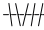



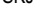
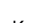


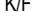



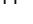

- ▶ ENTRÉ
- /// KAPPHYLLA
- G ENTRÉ
- ST STÄD
- G ENTRÉ
- SKJ SKJUTDÖRRSGARDEROB
- M/U HÖGSKÅP M MIKRO OCH UGN
- K KYL
- F FRY
- K/F KYL/FRYS
- DM DISKMASKIN
- INDUKTIONSHÄLL
- TM TVÄTTMASKIN
- TT TORKTUMLARE
- KM KOMBIMASKIN



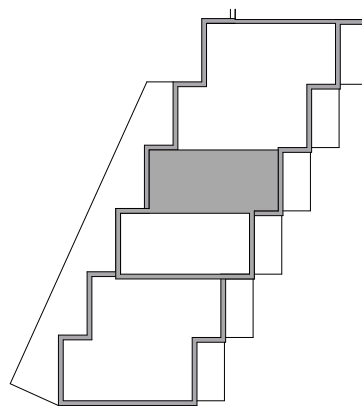
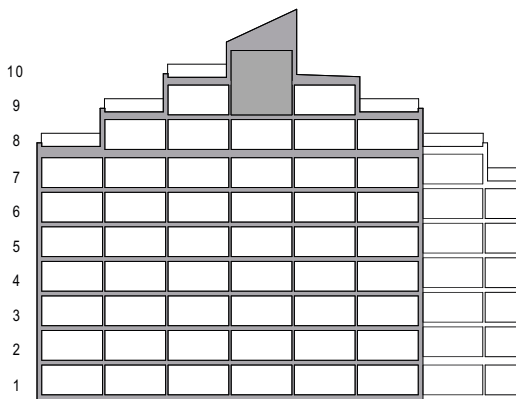
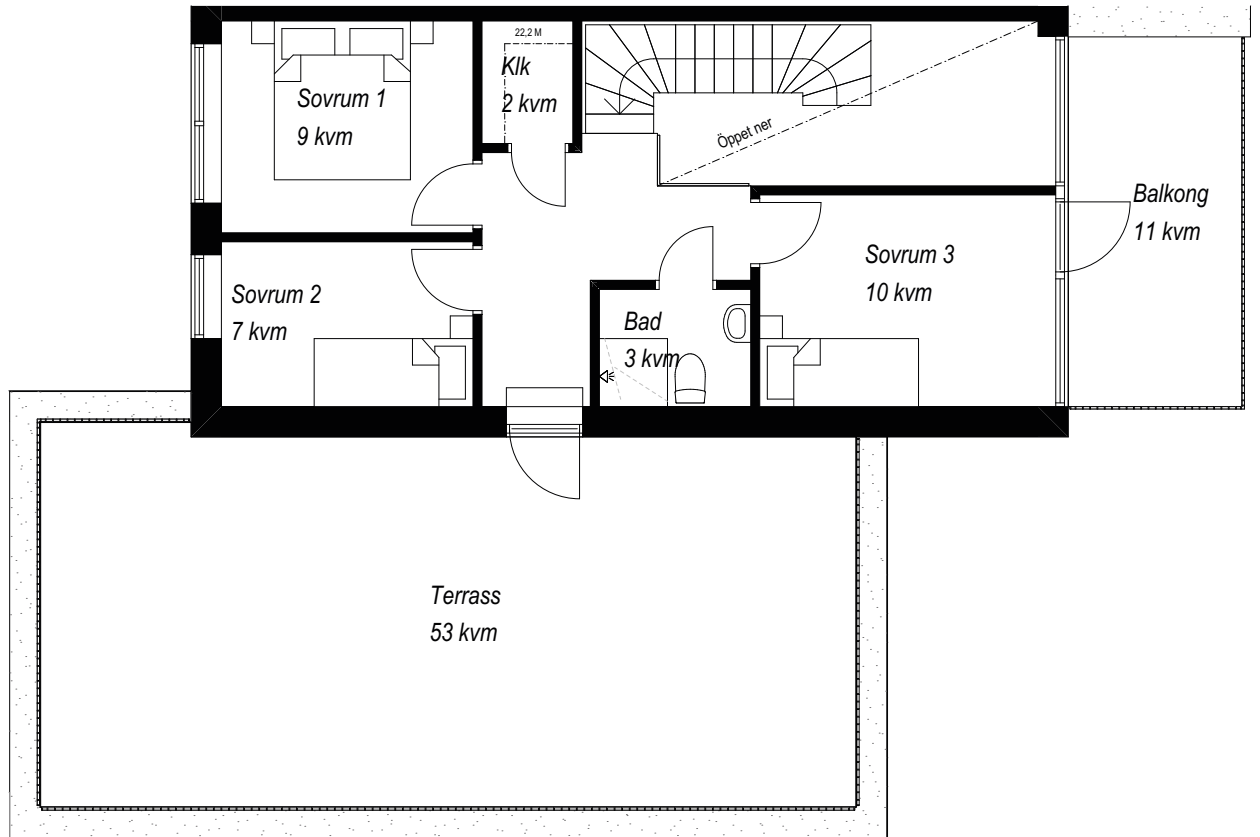
SKALA 1:100

AVVIKELSER KAN FÖREKOMMA. YTANGIVELSER ÄR PRELIMINÄRA



-  ENTRÉ
-  KAPPHYLLA
-  ENTRÉ
-  STÄD
-  ENTRÉ
-  SKJUTDÖRRSGARDEROB
-  HÖGSKÅP M MIKRO OCH UGN
-  KYL
-  FRY
-  KYL/FRY
-  DISKMASKIN
-  INDUKTIONSHÄLL
-  TVÄTTMASKIN
-  TORKTUMLARE
-  KOMBIMASKIN



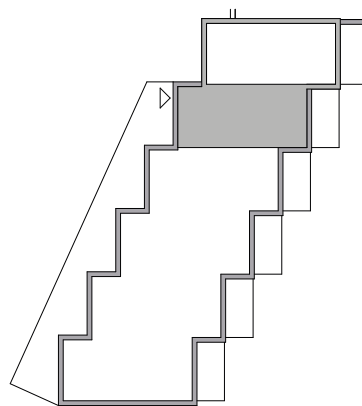
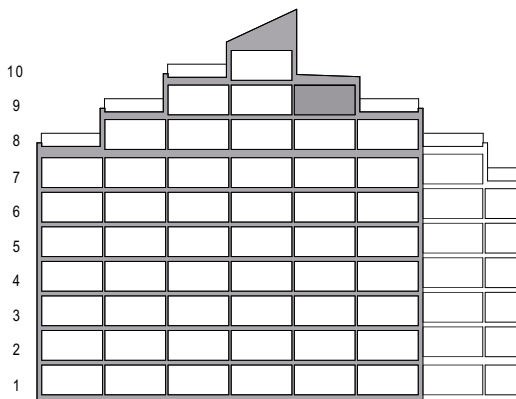
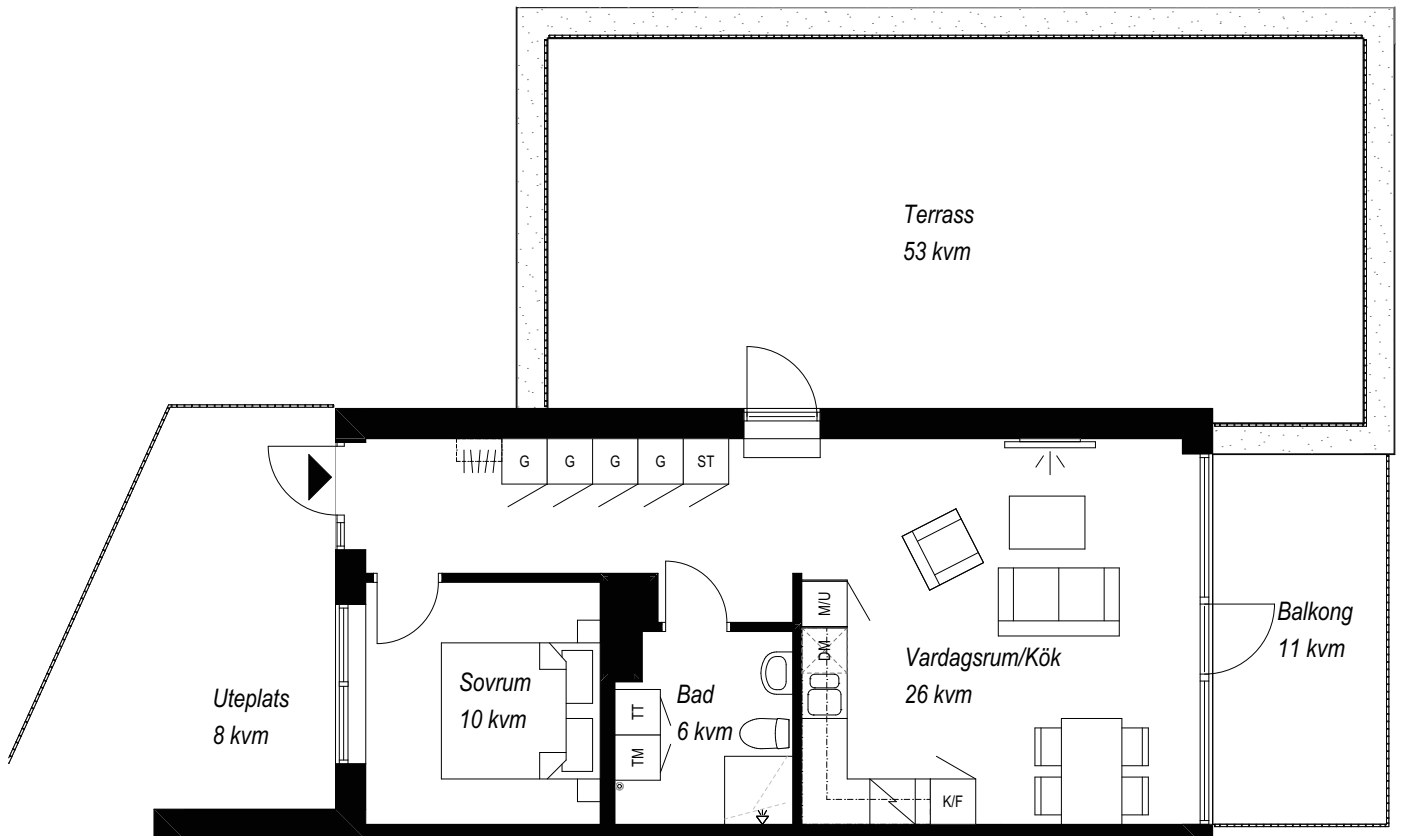


SKALA 1:100

AVVIKELSER KAN FÖREKOMMA. YTANGIVELSER ÄR PRELIMINÄRA




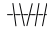



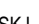



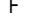



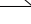

- ▶ ENTRÉ
- /// KAPPHYLLA
- G ENTRÉ
- ST STÄD
- G ENTRÉ
- SKJ SKJUTDÖRRSGARDEROB
- M/U HÖGSKÅP M MIKRO OCH UGN
- K KYL
- F FRYS
- K/F KYL/FRYS
- DM DISKMASKIN
- ◻ INDUKTIONSHÄLL
- TM TVÄTTMASKIN
- TT TORKTUMLARE
- KM KOMBIMASKIN



SKALA 1:100

AVVIKELSER KAN FÖREKOMMA. YTANGIVELSER ÄR PRELIMINÄRA



-  ENTRÉ
-  KAPPHYLLA
-  ENTRÉ
-  STÄD
-  ENTRÉ
-  SKJUTDÖRRSGARDEROB
-  HÖGSKÅP M MIKRO OCH UGN
-  KYL
-  FRY
-  KYL/FRY
-  DISKMASKIN
-  INDUKTIONSHÄLL
-  TVÄTTMASKIN
-  TORKTUMLARE
-  KOMBIMASKIN